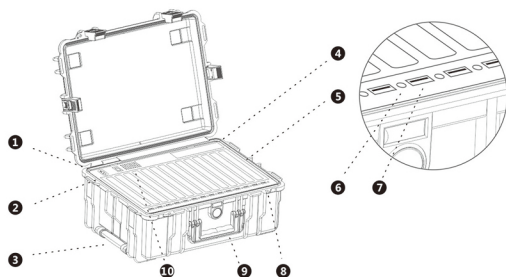


BM-R14LG

Mobile Charging station Trolley



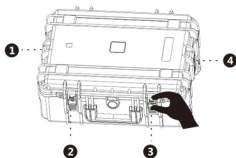
- 1 Power switch
- 2 Power interface
- 3 Trolley
- 4 Power cord slot
- 5 Tablets trough
- 6 Charge indicator
- 7 USB interface
- 8 Lockhole
- 9 Handle
- 10 Ventilation hole

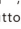

Accessories list

NO.	Accessories	Unit	Amount	Remark
1	Power cord	Pc	1	
2	USB cable	Pcs	14	
3	Manual	Pc	1	
4	Lockset(key)	Set	1	

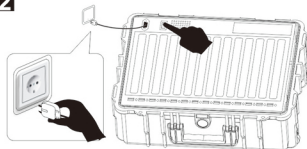
Instructions for operation

1



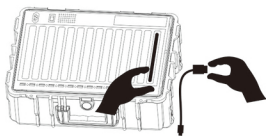
- Put the trolley case flatwise near the outlet.
- Before open the four clasps(red) on the close place, please confirm that the nearby button is on "  ", if not,slide it.After using the trolley , slide the button on "  " to prevent accidently open.

2



- Connect the power cord and insert it into the power outlet.
- Turn on the rocker switch button of the charge trolley case.

3



- Plug the USB cable into the ports of the Case,connected with the ipads.
- Don't close the cover or put it vertically when in charging.